

Cultivating Collaboration Among Multi-Organizational Teams

Welcome!

Please sit at a table with handouts.
We will have group discussions.

Cultivating Collaboration Among Multi-Organizational Teams

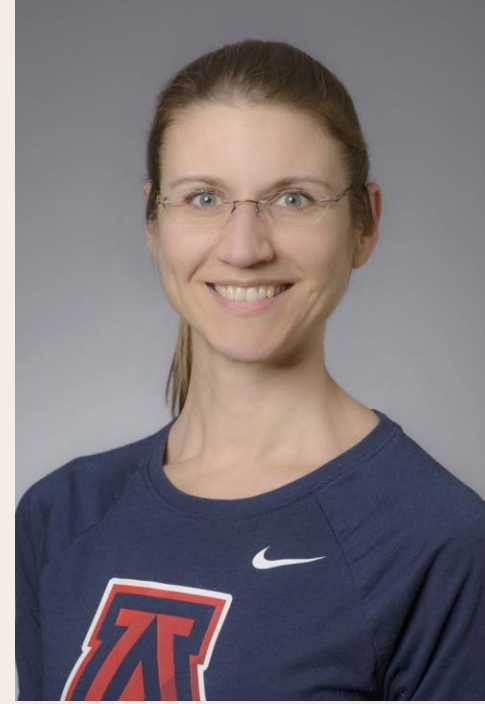
Inspired by:
CoPM Playbook © 2018 ICS Group & ASTC. All rights reserved.
Usage outside 2019 CoPM Institute organizations requires written
permission



Office of Societal Impact



Michelle Higgins
Associate Director



Cara Shopa
Program Manager



THE UNIVERSITY OF ARIZONA
RESEARCH, INNOVATION & IMPACT
Societal Impact

University of Arizona Land Acknowledgement



Agenda

- I. Why Multi-Organizational Partnerships: 2 sides of the coin
- II. What it means to center the team
- III. How to center the team





"Successful partnerships do not just *happen*, and planning is not just about *the tasks*."

CoPM Playbook © 2018 ICS Group & ASTC. All rights reserved.
Usage outside 2019 CoPM Institute organizations requires written permission



THE UNIVERSITY OF ARIZONA
RESEARCH, INNOVATION & IMPACT
Societal Impact

I. Multi-Organizational Partnerships: 2 sides of the coin



THE UNIVERSITY OF ARIZONA
RESEARCH, INNOVATION & IMPACT

Societal Impact



Multi-Organizational Partnerships Benefits

- **Table discussion**
- Meet institutional mission or designation
- Engage with the community
- Address complex problems
- Increase research impact
- Sustain the project
- Co-create a better project design
- Funder priority



THE UNIVERSITY OF ARIZONA
RESEARCH, INNOVATION & IMPACT

Societal Impact

Multi-Organizational Partnerships Challenges

- **Table discussions**
 - Nonaligned goals or priorities
 - Gaps in understanding
 - Mismatched timelines
 - Disciplinary language
 - Balances of power
 - Unchecked assumptions
 - Unclearified expectations
 - Differences in preferences
 - Differences in values



Multi-Organizational Partnerships

Centering the
team fosters
personal and
project success



THE UNIVERSITY OF ARIZONA
RESEARCH, INNOVATION & IMPACT
Societal Impact

II. What it means to center the team



THE UNIVERSITY OF ARIZONA
RESEARCH, INNOVATION & IMPACT

Societal Impact



Benefits of Centering Partnerships

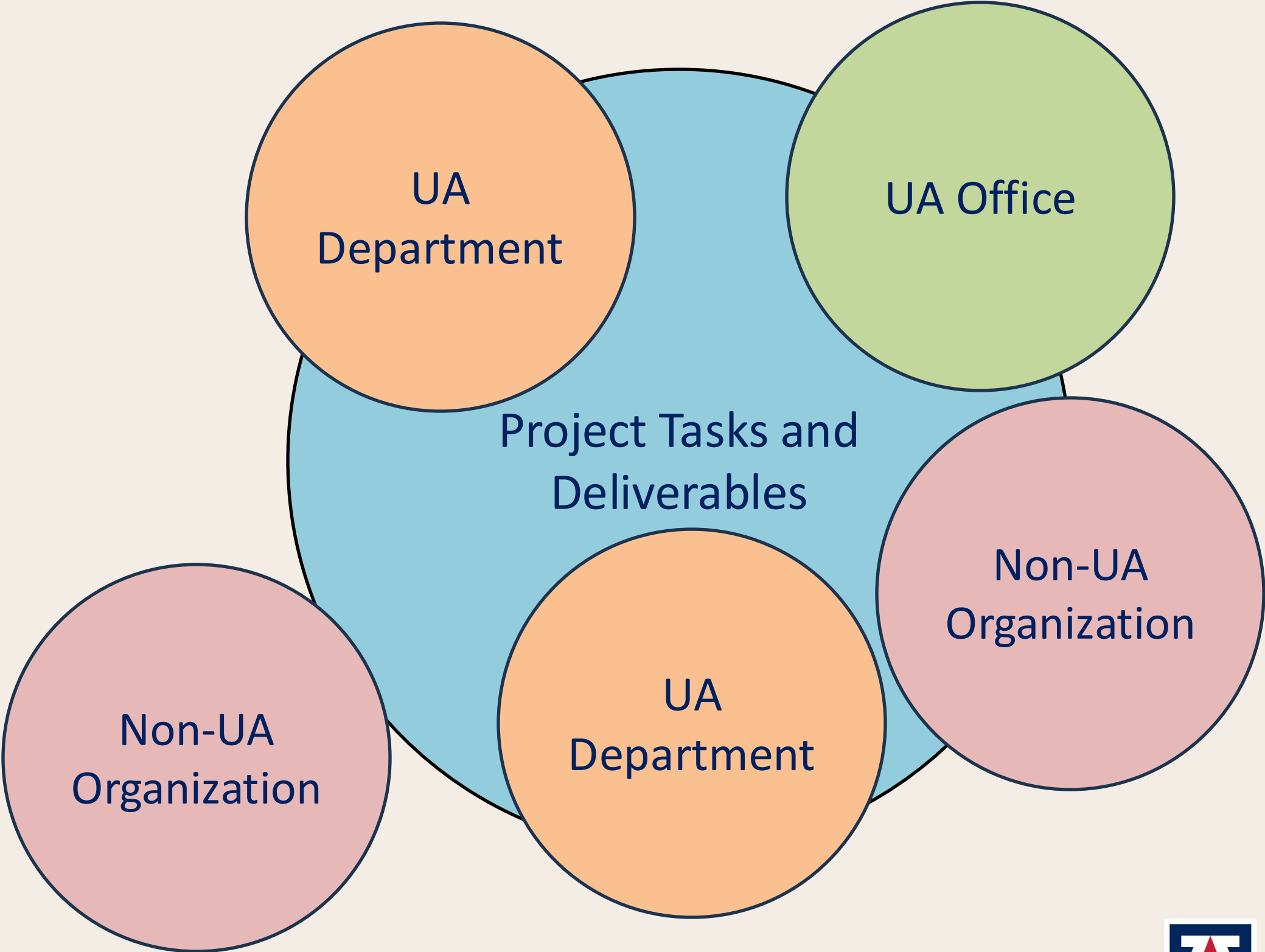
- Audience input
- Builds stronger and more sustainable relationships
- Coordinates diverse organizational cultures
- Promotes cross-team collaboration, instead of operating cooperatively
- Works to minimize or head-off frustrations and aggravations



THE UNIVERSITY OF ARIZONA
RESEARCH, INNOVATION & IMPACT

Societal Impact

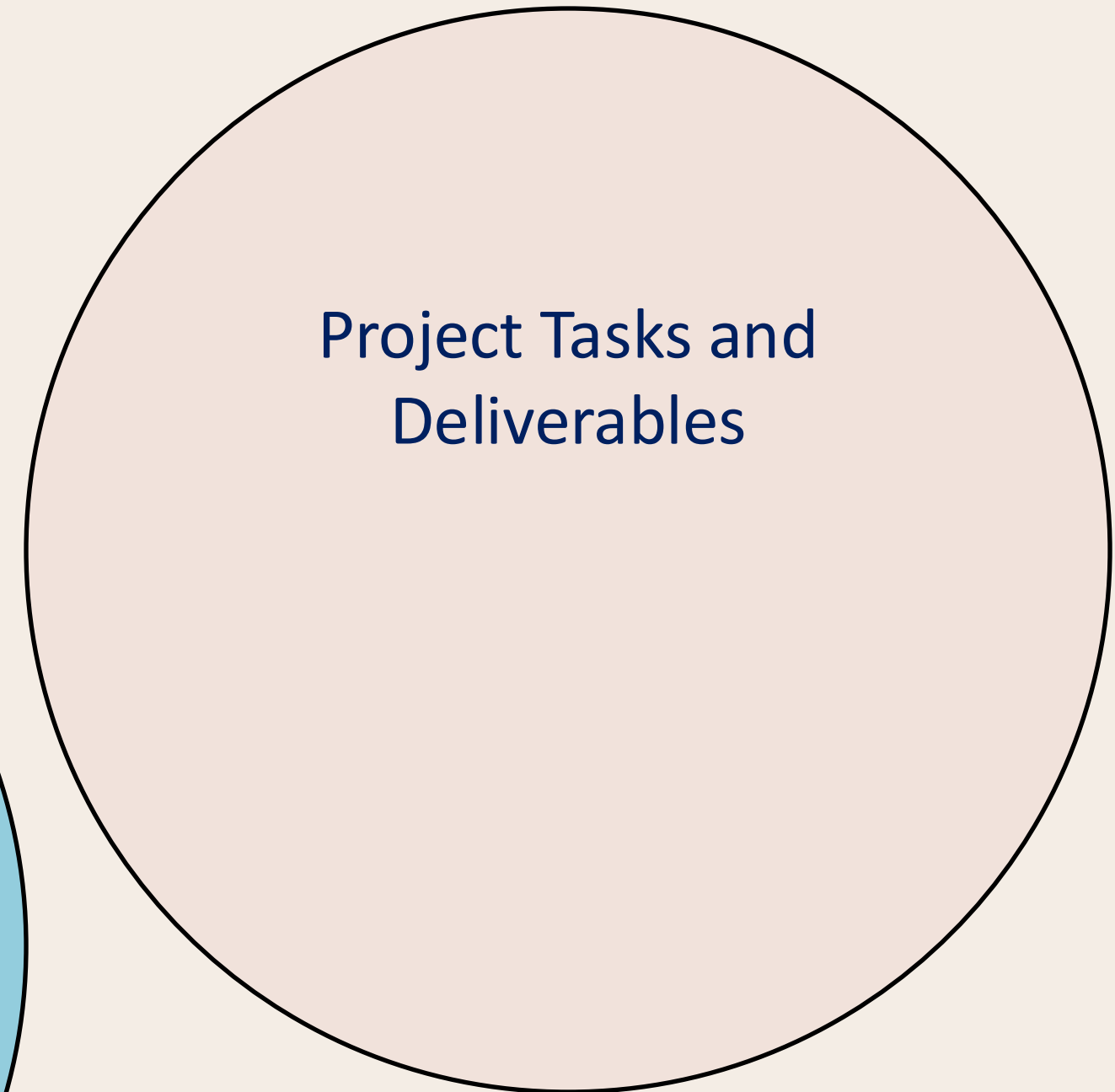
Project-Centered



THE UNIVERSITY OF ARIZONA
RESEARCH, INNOVATION & IMPACT

Societal Impact

Team-Centered



THE UNIVERSITY OF ARIZONA
RESEARCH, INNOVATION & IMPACT

Societal Impact

Team-Centered

Project Tasks and
Deliverables
Understanding Your
Team



THE UNIVERSITY OF ARIZONA
RESEARCH, INNOVATION & IMPACT

Societal Impact



Questions?



THE UNIVERSITY OF ARIZONA
RESEARCH, INNOVATION & IMPACT

Societal Impact

III. How to center the team: Collaborative Project Management Tools



THE UNIVERSITY OF ARIZONA
RESEARCH, INNOVATION & IMPACT

Societal Impact



Goals for Today:

- Understand our team members
- Plan for strong collaboration
- Create communication protocols



THE UNIVERSITY OF ARIZONA
RESEARCH, INNOVATION & IMPACT

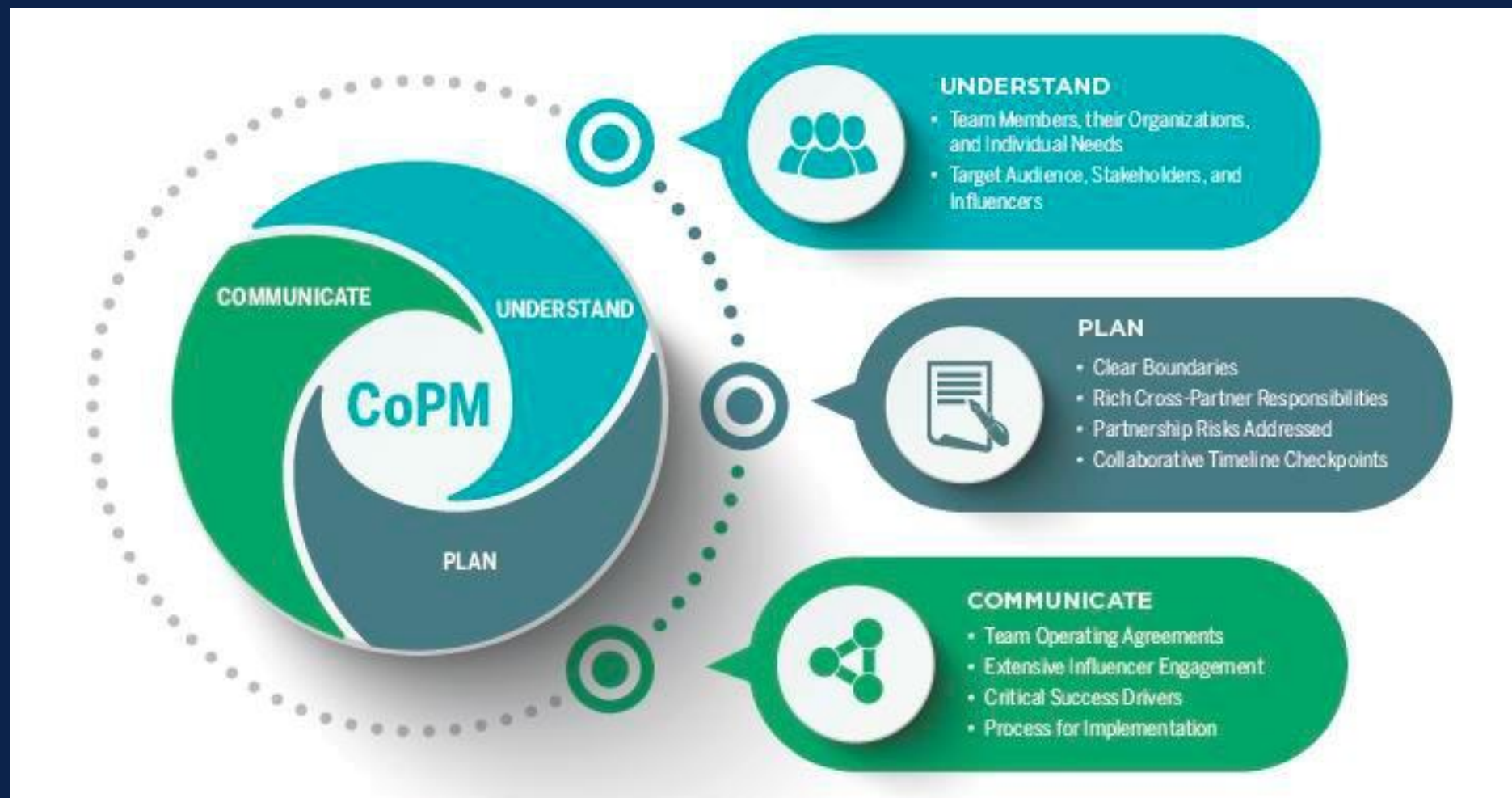
Societal Impact

12/9/24

This material is based upon work supported by the National Science Foundation under Grant 1836963. All materials are copyright protected and may not be used commercially or outside the Pilot CoPM Institute participant teams or their organizations without written permissions and terms of use agreed upon by ICS Group or ASTC.



A Collaborative Project Management (CoPM) Approach



CoPM provides a practical “team alignment” approach that enables strong teams with specialist expertise to come together and work toward a shared goal, while also achieving personal and departmental goals.

CoPM does not attempt to merge or change organizational cultures, but rather to coordinate those cultures such that the teams can work together well and ultimately meet their goals.

CoPM emphasizes intentionally creating a strong core team for a project across collaborators, rather than operating solely or mostly as individual teams from different departments.



THE UNIVERSITY OF ARIZONA
RESEARCH, INNOVATION & IMPACT

Societal Impact

Understanding Your Team

“We strive to understand each other, our “worlds,” our individual work, our passions and expertise, and our goals.”



Slides removed due to copyright

Your Turn

Review: Select one of the *Understand* tools on the table and review it with your group.

Discuss: How does this tool/activity address the risks to the team?

Share: What are the highlights of your discussion?



THE UNIVERSITY OF ARIZONA
RESEARCH, INNOVATION & IMPACT

Societal Impact

Planning for a Strong

“Intentionally design & plan for a strong collaboration based on the understandings gained about our team.”



Slides removed due to copyright

Your Turn

Review: Select one of the *Plan* tools on the table and review it with your group.

Discuss: How does this tool/activity address the risks to the team?

Share: What are the highlights of your discussion?



THE UNIVERSITY OF ARIZONA
RESEARCH, INNOVATION & IMPACT

Societal Impact

Communicate Effectively

"We recognize that communication is key to strong collaboration – so we start early and agree as a team on how to work together and communicate throughout."



Slides removed due to copyright

Your Turn

Review: Select one of the *Communicate* tools on the table and review it with your group.

Discuss: How does this tool/activity address the risks to the team?

Share: What are the highlights of your discussion?



THE UNIVERSITY OF ARIZONA
RESEARCH, INNOVATION & IMPACT

Societal Impact



Questions?



THE UNIVERSITY OF ARIZONA
RESEARCH, INNOVATION & IMPACT

Societal Impact



Thank you

Michelle Higgins

mlhiggins@arizona.edu

Cara Shopa

caraduncan@arizona.edu

Impact.arizona.edu



THE UNIVERSITY OF ARIZONA
RESEARCH, INNOVATION & IMPACT

Societal Impact